

# **PANICKKER SWITCHGEAR**

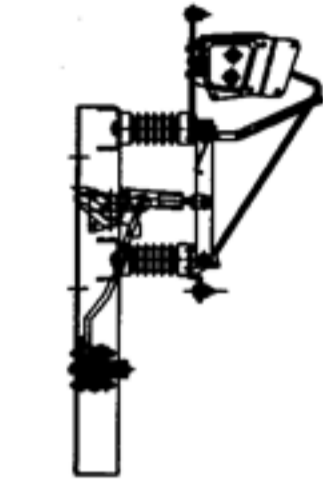
**THANDALAM P.O., SRIPERUMBUDUR.**

## **LOAD BREAK SWITCH** **TYPE - LDTP** **PANEL/WALL MOUNTED**

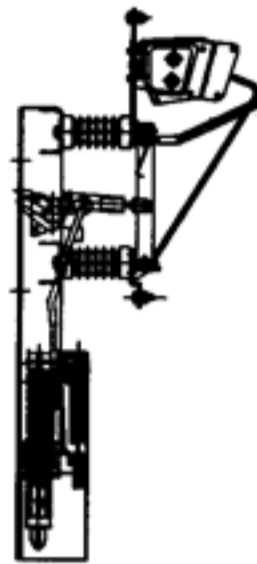
### **INSTRUCTION FOR MOUNTING/INSTALLATION OF LOAD BREAK SWITCH**

**DETAILED INSTRUCTION FOR MOUNTING / INSTALLATION**  
**MANUAL FOR INDOOR LOAD BREAK SWITCH TYPE LDTP/ F,EA,&SEA**  
**SUITABLE FOR WALL / PANEL ZLDT**

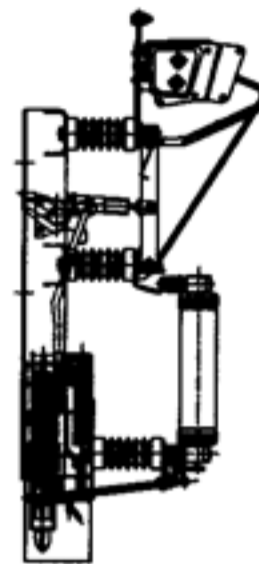
**\* 11KV LOAD BREAK SWITCH**



**F - MECHANISM**

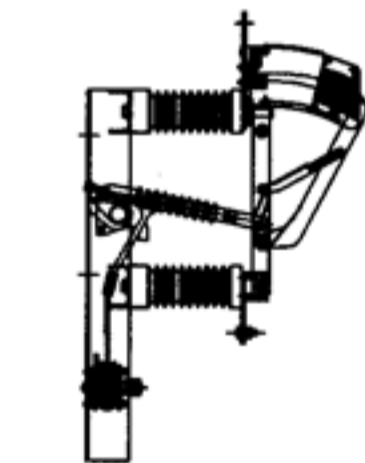


**EA - MECHANISM**

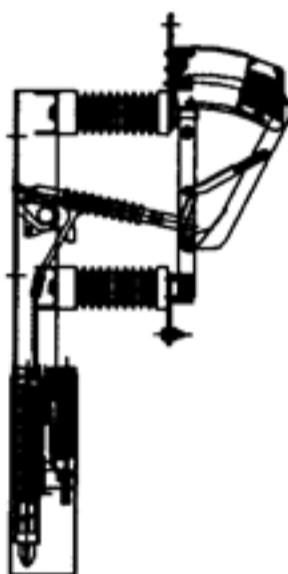


**SEA - MECHANISM**

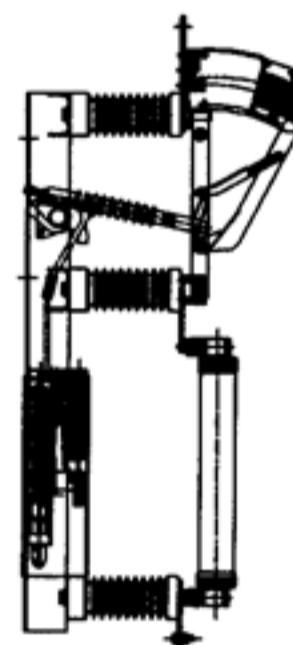
**\* 22KV LOAD BREAK SWITCH**



**F - MECHANISM**

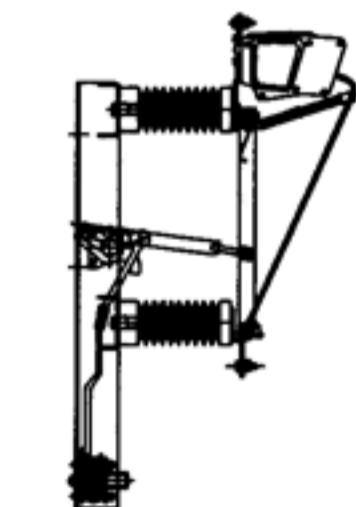


**EA - MECHANISM**

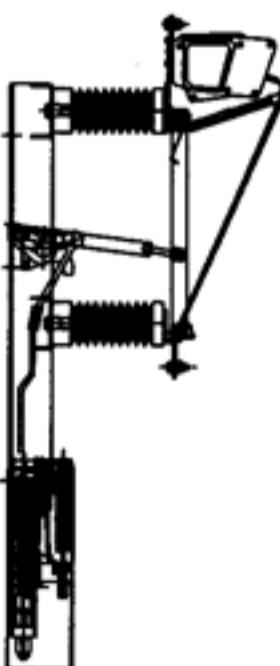


**SEA - MECHANISM**

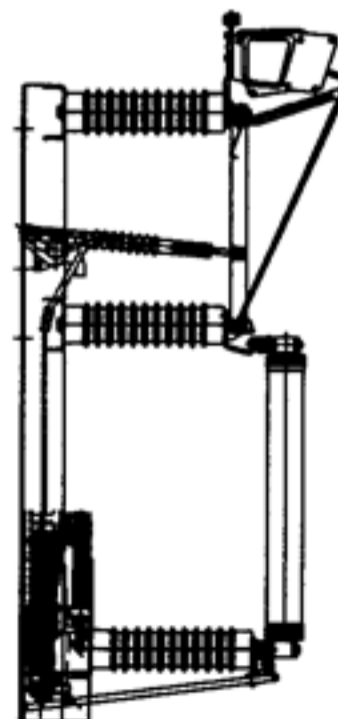
**\* 33KV LOAD BREAK SWITCH**



**F - MECHANISM**



**EA - MECHANISM**



**SEA - MECHANISM**

**DETAILED INSTRUCTION FOR MOUNTING / INSTALLATION**  
**MANUAL FOR INDOOR LOAD BREAK SWITCH TYPE LDTP/ F,EA,&SEA**  
**SUITABLE FOR WALL / PANEL ZLDT**

**1) Take the Switch from the Wooden case carefully by using switch frame only.[Don't use contact Blades, Quenching Chamber or Arcing Pin for handling the Switch]**

**2) Loose Items are kept inside the Wooden Case as following,**

- \* Rear End Coupling with Extension Rod**
- \* Operating Handle**
- \* Front End Coupling**
- \* 16mm Guide Bush**
- \* Nylon Bush**
- \* Dowel Pin [ 8x40 , 5x40 ]**
- \* Mechanical ON / OFF Label**
- \* Main Switch Label**
- \* Operating Instruction Label**

**3) These are Four Mounting Holes (14Ø) in the switch frame.**

**4) Mount the Switch Vertically by using the mounting Holes.**

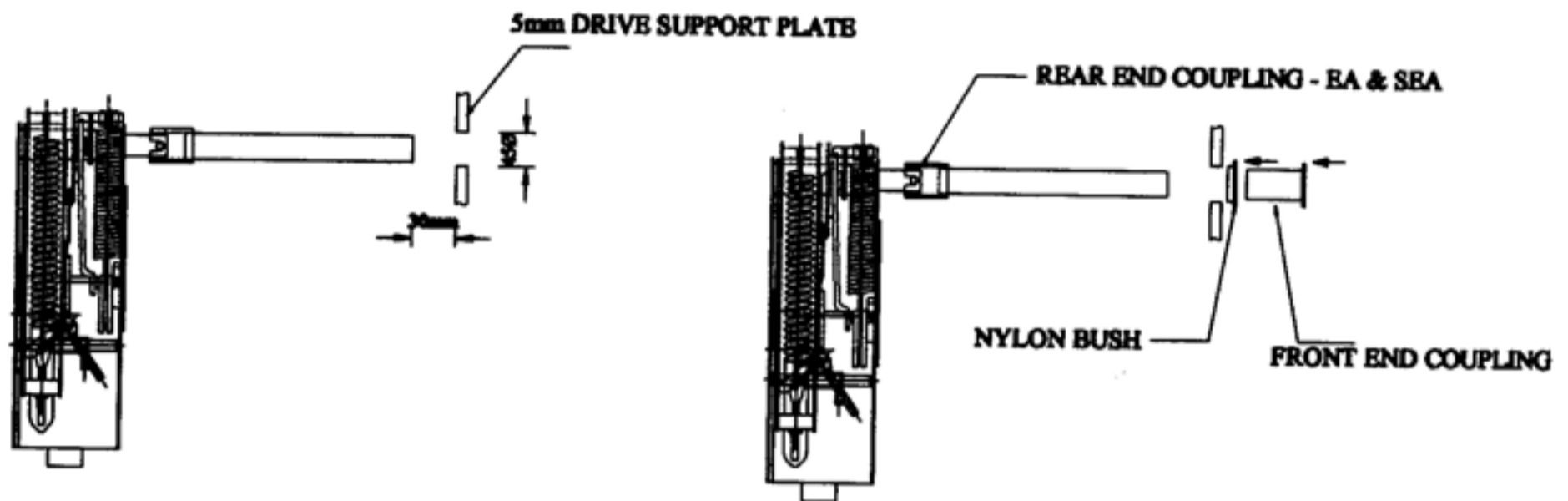
**5) Take the 5mm thickness drive support plate.**  
**[Note:- The support plate is not in our scope]**

**6) Drill the 45Ø hole in the support plate.**  
**[The Dimension of the Hole depends upon the line width of the mechanism drive]**

**7) The Drive shaft is already provided with the required coupling on one End.**

**8) Depends upon the KV Rating the dimension of the drive shaft can be varied.**

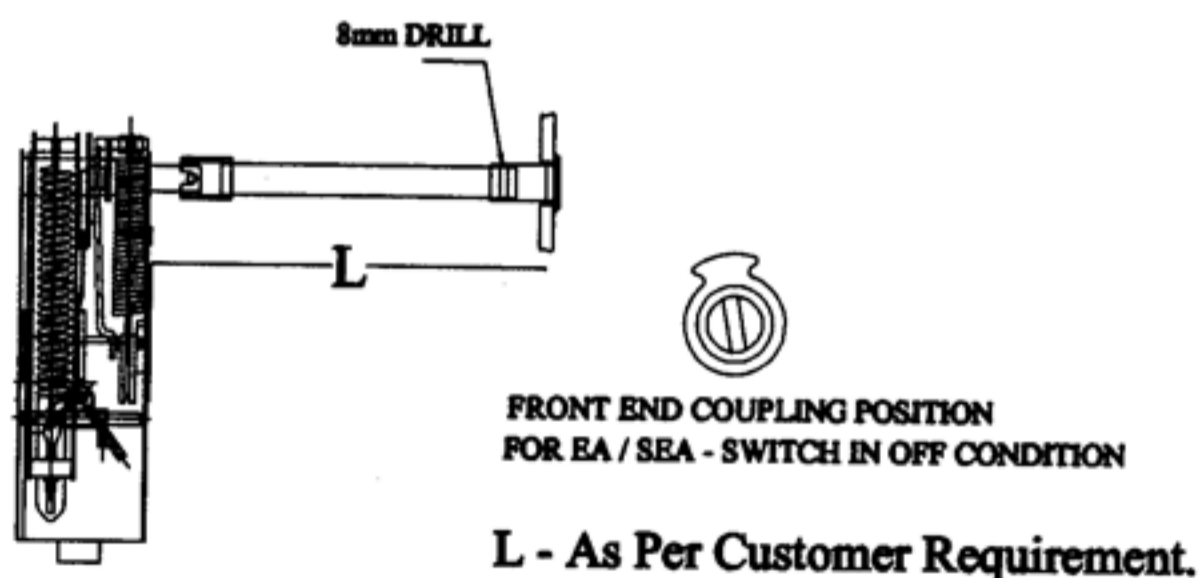
**DETAILED INSTRUCTION FOR MOUNTING / INSTALLATION**  
**MANUAL FOR INDOOR LOAD BREAK SWITCH TYPE LDTP/ F,EA,&SEA**  
**SUITABLE FOR WALL / PANEL ZLDT**



**9) Engage the Drive as Shown above, Cut the length of the drive shaft to length [ 30mm in front of the support plate] as detailed above.**

**10) Insert the Nylon Bush in the 45Ø holes .  
 [ In front of the plate ]**

**11) Then, insert the Front End Coupling through the Nylon bush on to the drive. While positioning the Front End Coupling in the direction shown below.**

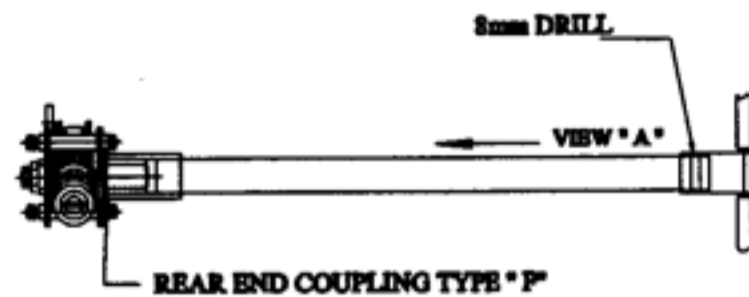


**12) Drill the 8Ø hole through the front End Coupling and Drive Shaft.**

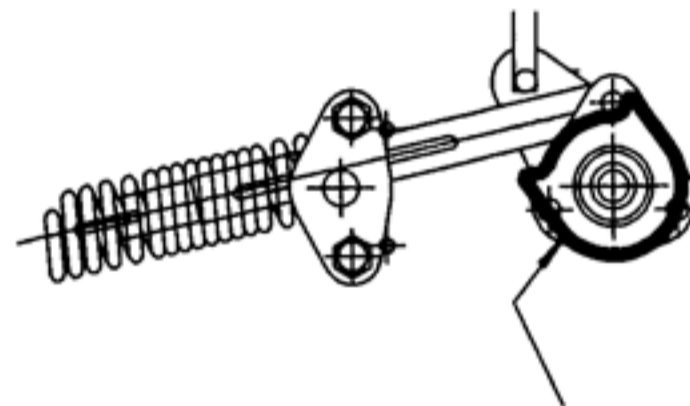
**13) The length of the drive shaft can be varied depends upon the customer requirement.**

**DETAILED INSTRUCTION FOR MOUNTING / INSTALLATION**  
**MANUAL FOR INDOOR LOAD BREAK SWITCH TYPE LDTP/ F,EA,&SEA**  
**SUITABLE FOR WALL / PANEL ZLDT**

**Special instruction for LBS with ' F ' type Mechanism**



FRONT END COUPLING POSITION  
FOR F - SWITCH IN ON CONDITION



\* F \* REAR END COUPLING POSITION WITH  
SWITCH IN ON CONDITION

**14) Remove the Front End Coupling and insert the Stop Collar [ Back side of the support plate ]**

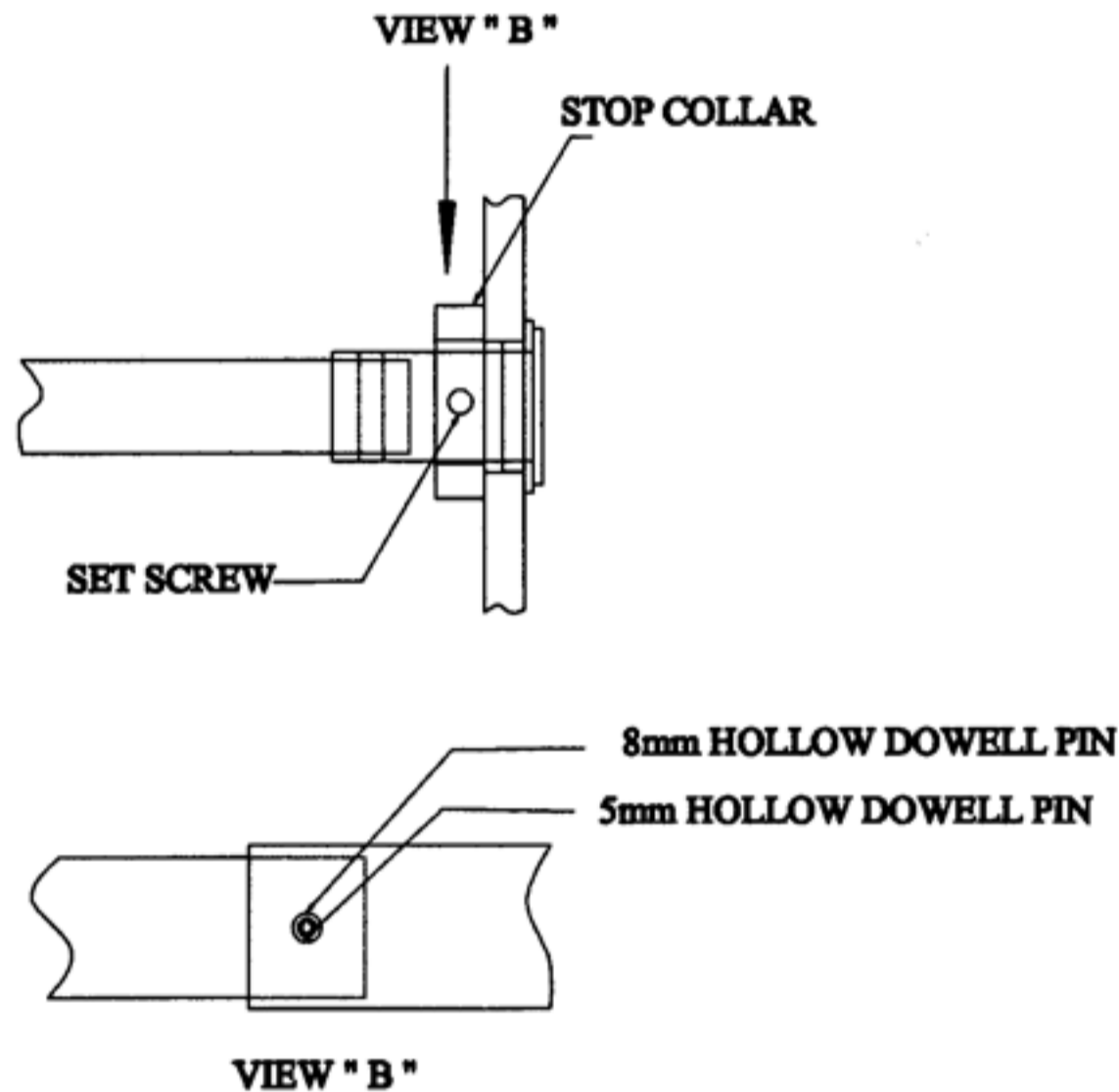
**15) Then insert the Front End Coupling in the front side of the support plate.**

**16) Now Drive 8mm Hollow Dowel Pin into the 8mm holes drilled with the slot on the dowel in the direction.**

**17) Next, Drive the 5mm dowel pin in to the 8mm Dowel already driven with the slot in the opposite direction.**

**DETAILED INSTRUCTION FOR MOUNTING / INSTALLATION**  
**MANUAL FOR INDOOR LOAD BREAK SWITCH TYPE LDTP/ F,EA,&SEA**  
**SUITABLE FOR WALL / PANEL ZLDT**

**18) Move the Stop Collar close to the drive plate and tighten using the Set Screw provided.**



**19) An Operation Instruction Label is sent along with the Switch for F , EA and SEA switches.**

**20) If the above process is satisfied, supply is given to the switch and then proceed your process.**

**Note:-**

**The switch is designed to take the load of its components and the forces during its operation only. While connecting the bus bars / cables ensure that they are supported adequately without their load coming on to the switch. Also ensure that the top and bottom terminal alignments are not disturbed while connections are made.**

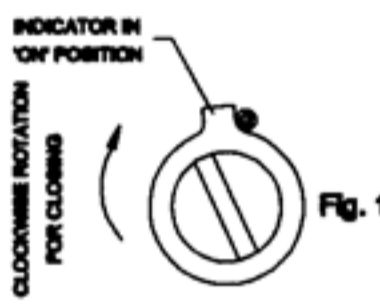

**DETAILED INSTRUCTION FOR MOUNTING / INSTALLATION**  
**MANUAL FOR INDOOR LOAD BREAK SWITCH TYPE LDTP/ F,EA,&SEA**  
**SUITABLE FOR WALL / PANEL ZLDT**

**\* for EA & SEA Mechanism Switch**

<p><b><u>OPERATING INSTRUCTIONS</u></b> (FOR LOAD BREAK SWITCH WITH MECH TYPE EA &amp; SEA)</p>	
<p><b><u>MECHANISM CHARGING:</u></b> INSERT THE OPERATING HANDLE AND ROTATE THE HANDLE FULLY IN ANTI CLOCKWISE DIRECTION UNTIL NO FURTHER ROTATION IS POSSIBLE. DURING THIS OPERATION THE TRIPPING SPRING GETS CHARGED (Fig. 1)</p>	<p>Fig. 1</p>
<p><b><u>SWITCHING ON:</u></b> ROTATE THE HANDLE IN CLOCKWISE DIRECTION FULLY. DURING THIS OPERATION THE CLOSING SPRING GETS CHARGED AND IMMEDIATELY DISCHARGES CLOSING THE LOAD BREAK SWITCH. (Fig. 2)</p>	<p>Fig. 2</p>
<p><b><u>SWITCHING OFF:</u></b> INSERT THE OPERATING HANDLE AND ROTATE IN ANTI CLOCKWISE DIRECTION UNTIL THE TRIPPING SPRING DE-ENERGISES AND OPENS THE LOAD BREAK SWITCH. (Fig. 3)</p>	<p>Fig. 3</p>
<p><b><u>NOTE:</u></b> EARTH SWITCH IF PROVIDED CAN BE CLOSED ONLY WITH THE MECHANISM IN CHARGED CONDITION.</p>	

**DETAILED INSTRUCTION FOR MOUNTING / INSTALLATION**  
**MANUAL FOR INDOOR LOAD BREAK SWITCH TYPE LDTP/ F,EA,&SEA**  
**SUITABLE FOR WALL / PANEL ZLDT**

**\* for F Mechanism Switch**

<b>OPERATING INSTRUCTIONS</b> (FOR LOAD BREAK SWITCH WITH MECHANISM)	
<p><b><u>SWITCHING ON:</u></b> ROTATE THE HANDLE IN CLOCKWISE DIRECTION FULLY. DURING THIS OPERATION THE SWITCH IS CLOSED. (Fig. 1)</p>	 <p>INDICATOR IN 'ON' POSITION CLOCKWISE ROTATION FOR CLOSING Fig. 1</p>
<p><b><u>SWITCHING OFF:</u></b> INSERT THE OPERATING HANDLE AND ROTATE IN ANTI CLOCKWISE DIRECTION AND OPENS THE LOAD BREAK SWITCH. (Fig. 2)</p>	 <p>ANTICLOCKWISE ROTATION FOR TRIPPING INDICATOR IN 'OFF' POSITION Fig. 3</p>

---

---

**PANICKKER SWITCHGEAR PRIVATE LIMITED,  
THANDALAM POST,  
SRIPERUMBUDUR-602 105,  
TAMIL NADU, INDIA.**  
Phone: +91-44-27156245/27156175  
Fax: +91-44-27156176/24754596  
E-mail: [info@panickker.com](mailto:info@panickker.com)  
Web: [www.panickker.com](http://www.panickker.com)