

DETAILED INSTRUCTION FOR MOUNTING / INSTALLATION
OF THE PORCELAIN CLAD VACUUM CIRCUIT BREAKER OUTDOOR TYPE

Panickker Switchgear Porcelain Clad Vacuum Circuit Breaker is a fully factory assembled breaker with no bolting or coupling required for the breaker to be operational.

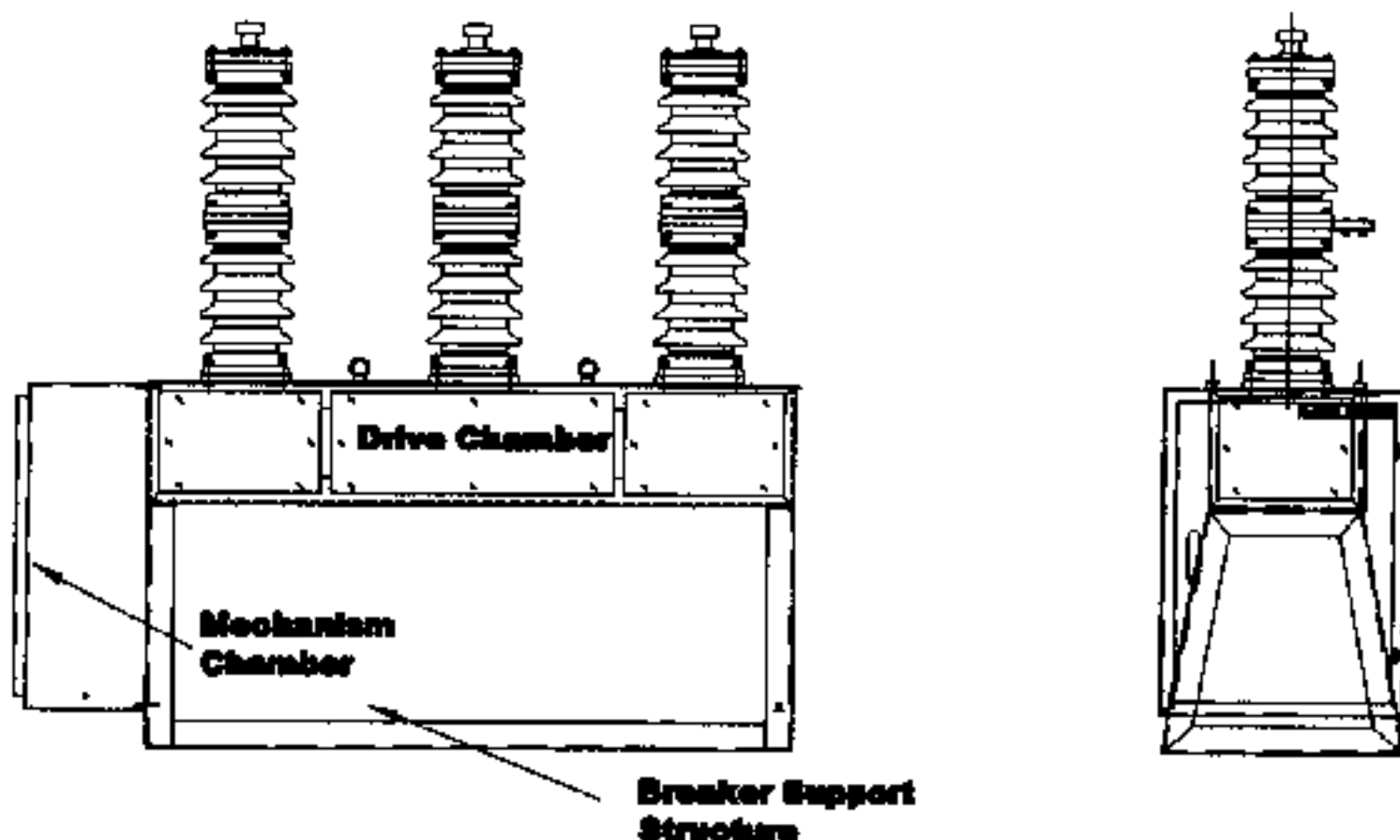
The PCVCB (Porcelain Clad Vacuum Circuit Breaker) is despatched packed in crate, with the accompanying structures packed separately.

Always store the PCVCB crate in up right condition. Do not lean the crate or lay it on its side, as this will lead to breakage of the porcelain bushings.

After moving to the site, remove the top and then the sides of the crate. The operating handle for the breaker is tied to the side member of the support structure of the breaker. Remove the handle and store it safely.

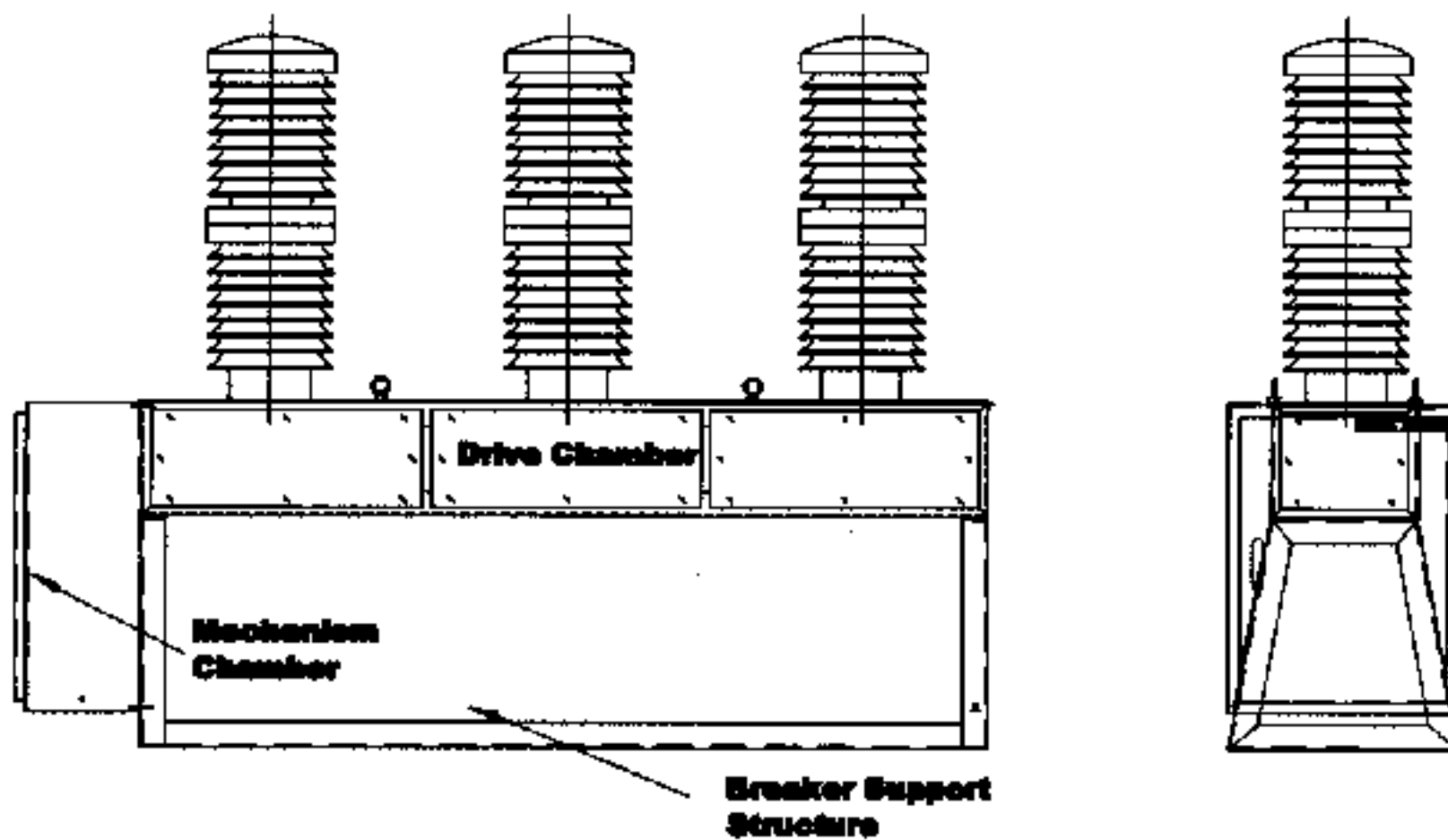
The breaker support structure is bolted on to the base of the crate by 4 bolts. Remove these four bolts.

*** 11KV PCVCB :-**

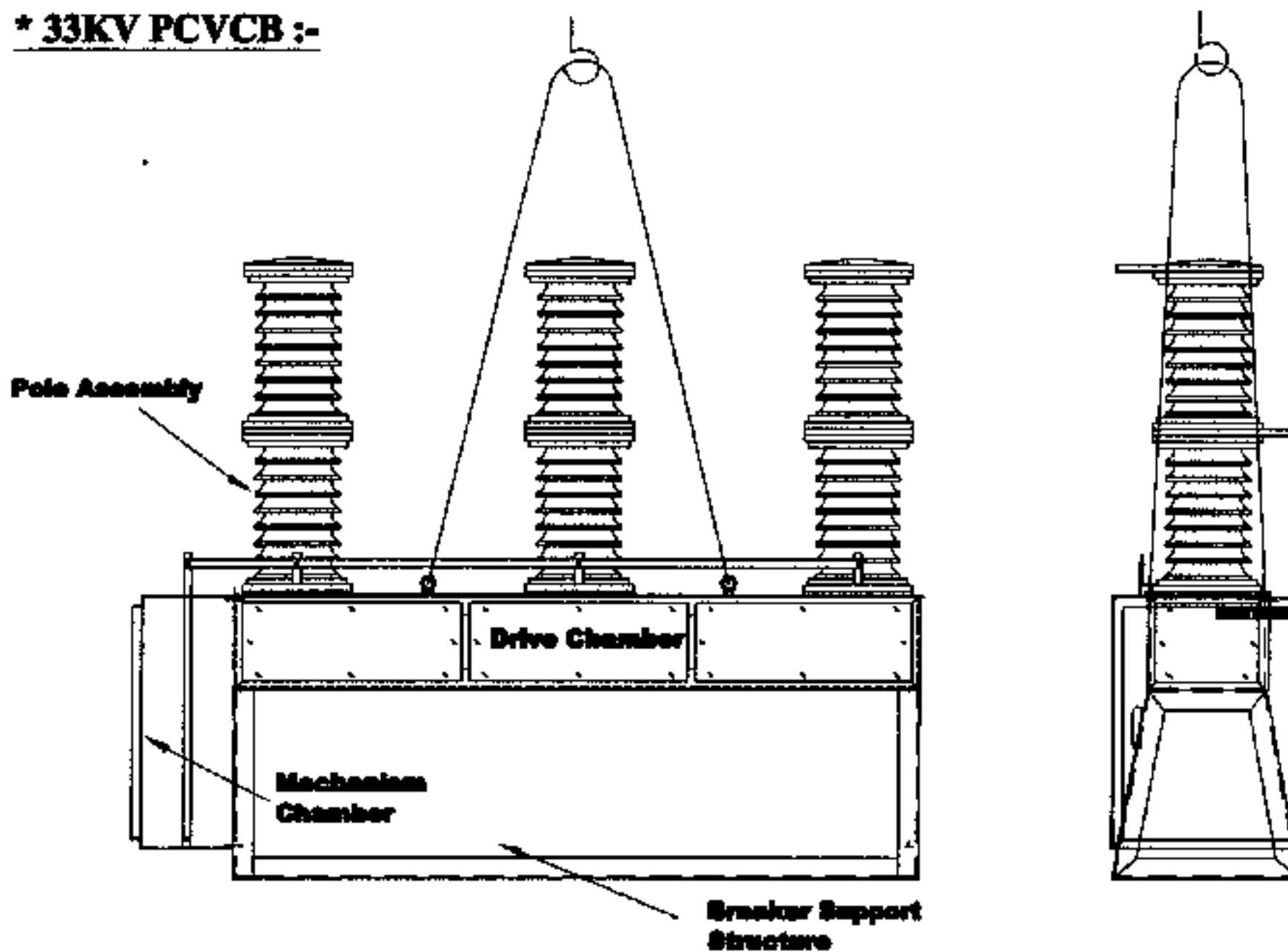


DETAILED INSTRUCTION FOR MOUNTING / INSTALLATION
OF THE PORCELAIN CLAD VACUUM CIRCUIT BREAKER OUTDOOR TYPE

*** 22KV PCVCB :-**



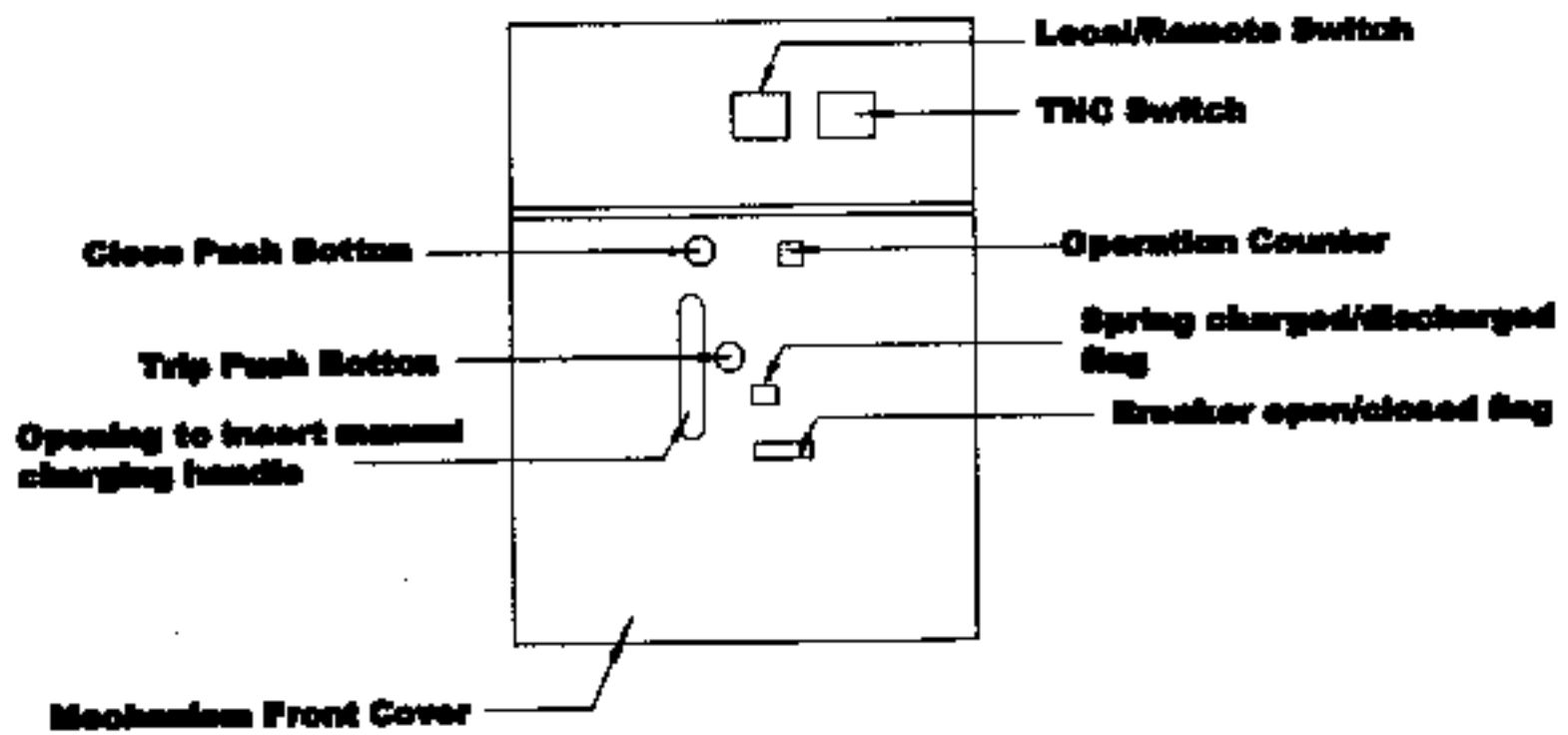
*** 33KV PCVCB :-**



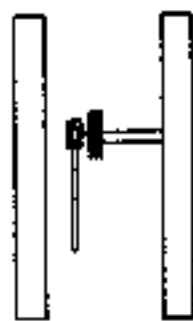
DETAILED INSTRUCTION FOR MOUNTING / INSTALLATION
OF THE PORCELAIN CLAD VACUUM CIRCUIT BREAKER OUTDOOR TYPE

Lift the breaker from the crate base using the four lifting hooks provided as shown below and place it on level floor.

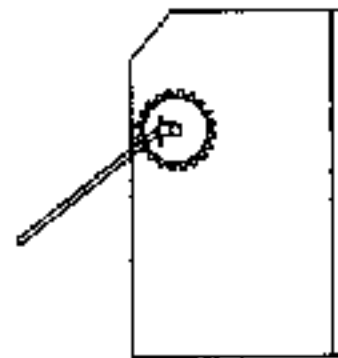
Open the mechanism chamber door, Breaker control details will be seen as below



Insert charging handle and engage on to the Mechanism as shown below



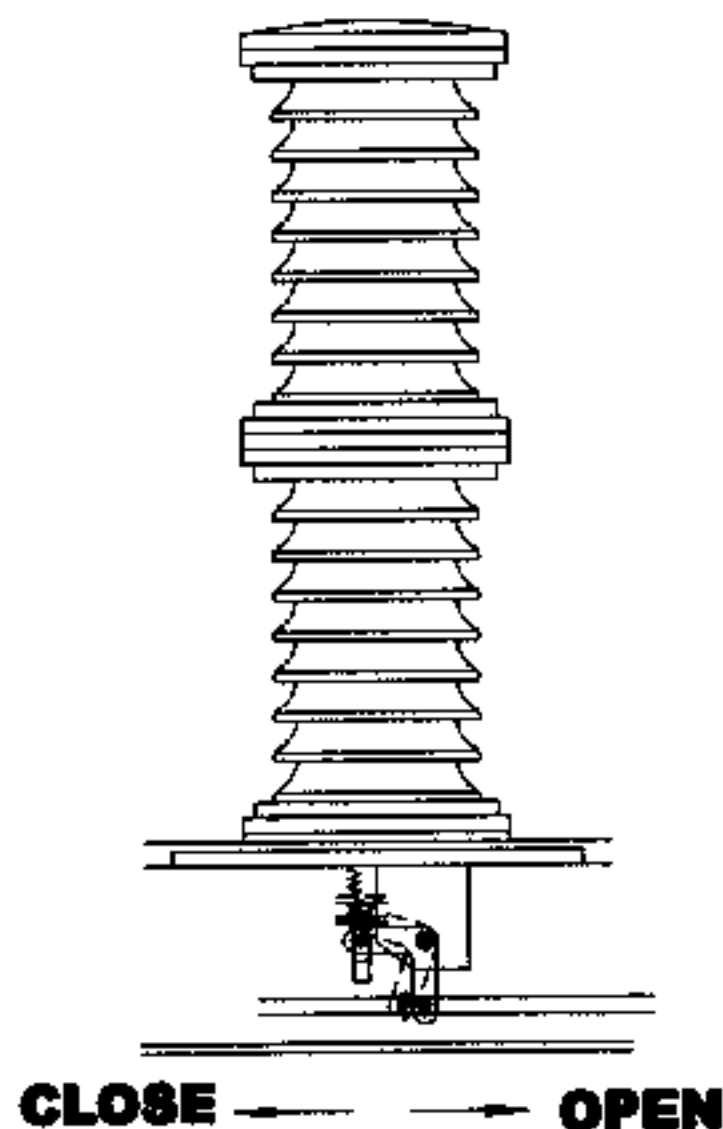
Mechanism Front View



Mechanism Side View

DETAILED INSTRUCTION FOR MOUNTING / INSTALLATION
OF THE PORCELAIN CLAD VACUUM CIRCUIT BREAKER OUTDOOR TYPE

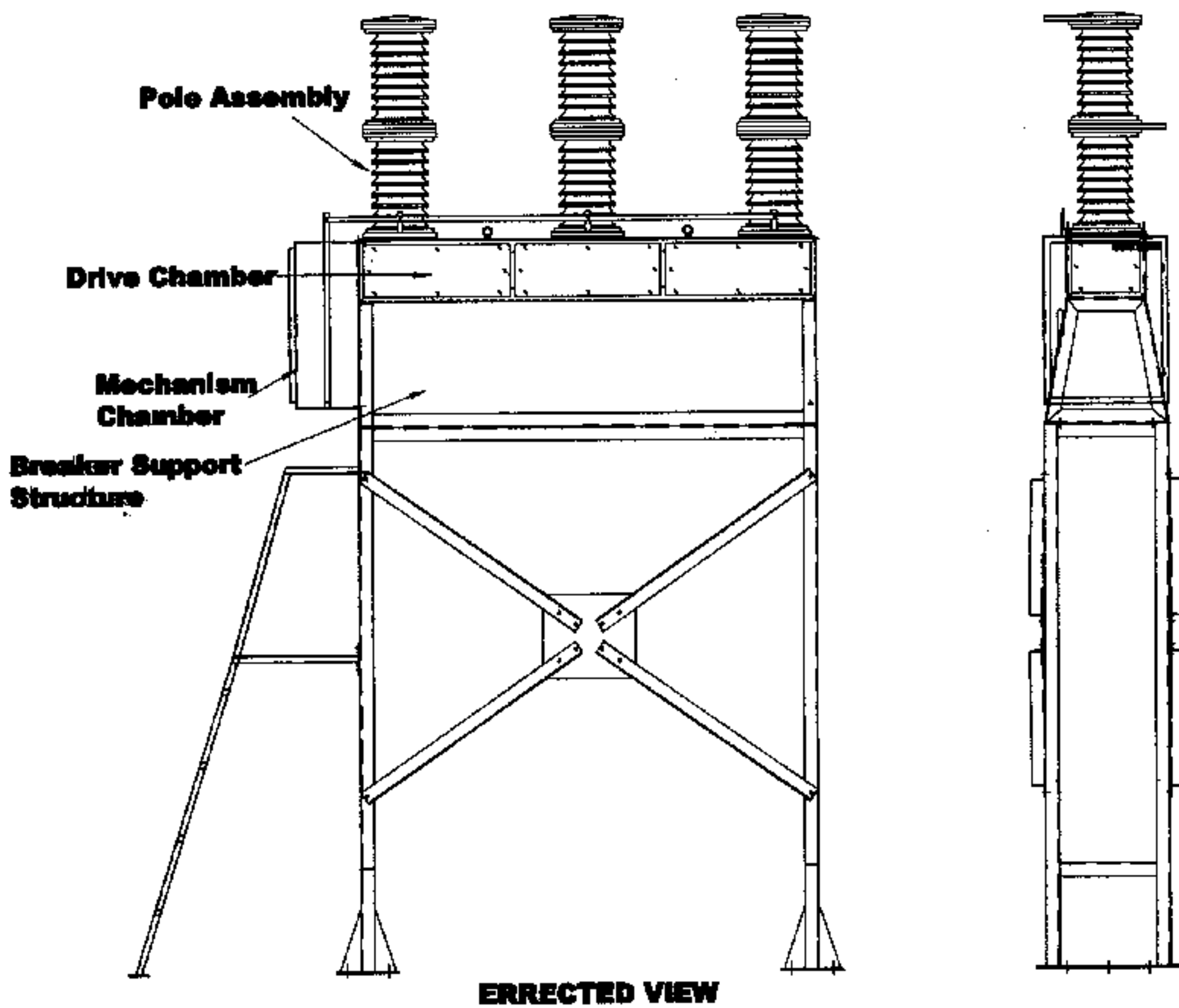
- * **The charging Handle has to be moved up and down continuously for spring charging the breaker.**
- * **The Handle will move freely up and has to be pushed down by force while charging.**
- * **When the charging is complete, the 'spring discharged' flag will change to 'spring charged' and it will not be possible to move the handle further.**
- * **Remove the handle from breaker mechanism.**
- * **Press the close push button. The breaker will close.**
- * **Press the trip push button. The breaker will open.**
- * **The mechanism is fixed at one end of the breaker and all the three poles of the breaker are simultaneously operated via a gang operating pipe, which moves horizontally forward and backward from the mechanism.**



DETAILED INSTRUCTION FOR MOUNTING / INSTALLATION
OF THE PORCELAIN CLAD VACUUM CIRCUIT BREAKER OUTDOOR TYPE

*** Assemble the structure on the foundation (which has to be prepared in advance as per details of foundation.)**

*** The breaker can now be lifted by the lifting hooks and placed on the assembled structure and securely bolted.**

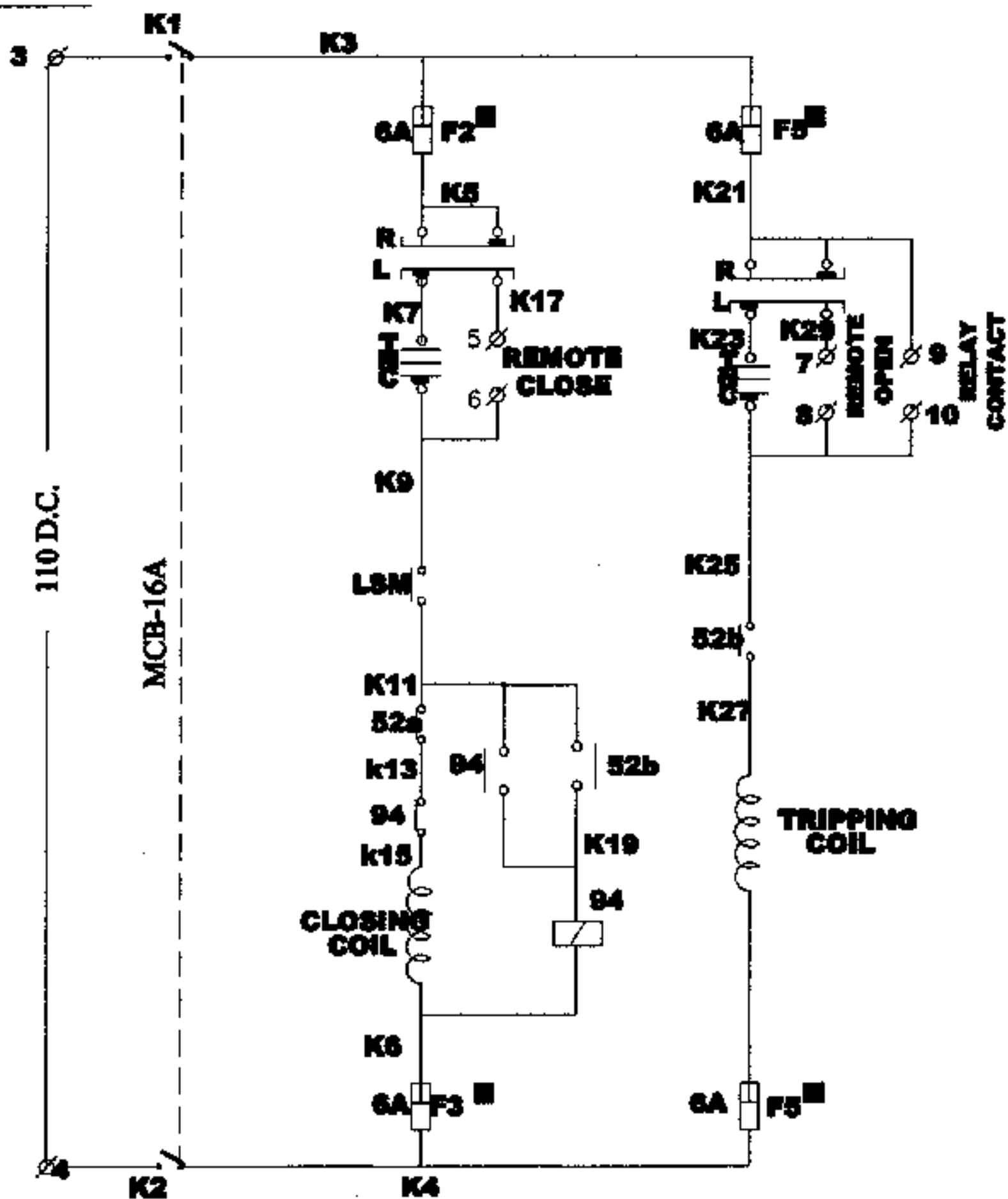


DETAILED INSTRUCTION FOR MOUNTING / INSTALLATION
OF THE PORCELAIN CLAD VACUUM CIRCUIT BREAKER OUTDOOR TYPE

* **The Earthing terminal is available on the left side of the mechanism chamber. The breaker can now be earthed from this point.**

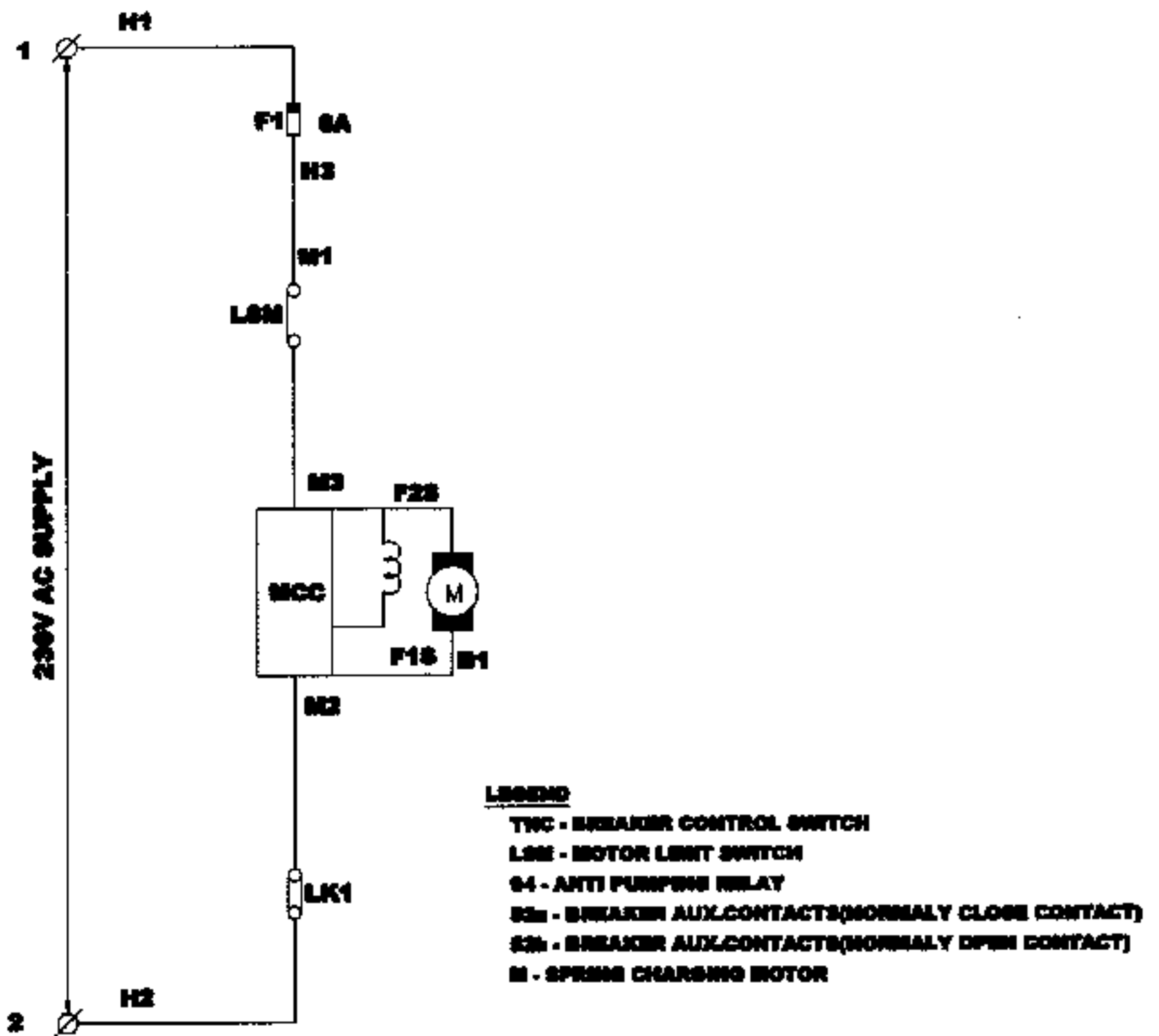
* **Electrical connections for operating the breaker electrically can now be made to the terminal blocks(available in the mechanism box, behind the mechanism front cover) by following the wiring diagram as given below.**

control circuit



DETAILED INSTRUCTION FOR MOUNTING / INSTALLATION
OF THE PORCELAIN CLAD VACUUM CIRCUIT BREAKER OUTDOOR TYPE

control circuit



**PANICKKER SWITCHGEAR PRIVATE LIMITED,
 THANDALAM POST,
 SRIPERUMBUDUR-602 105,
 TAMIL NADU, INDIA.**

**Phone: +91-44-27156245/27156175
 Fax: +91-44-27156176/24754596
 E-mail: info@panickker.com
 Web: www.panickker.com**