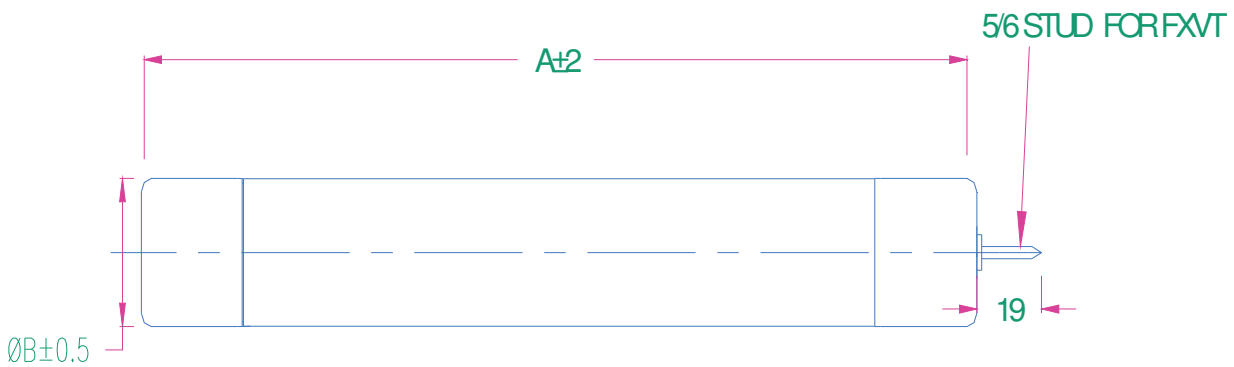
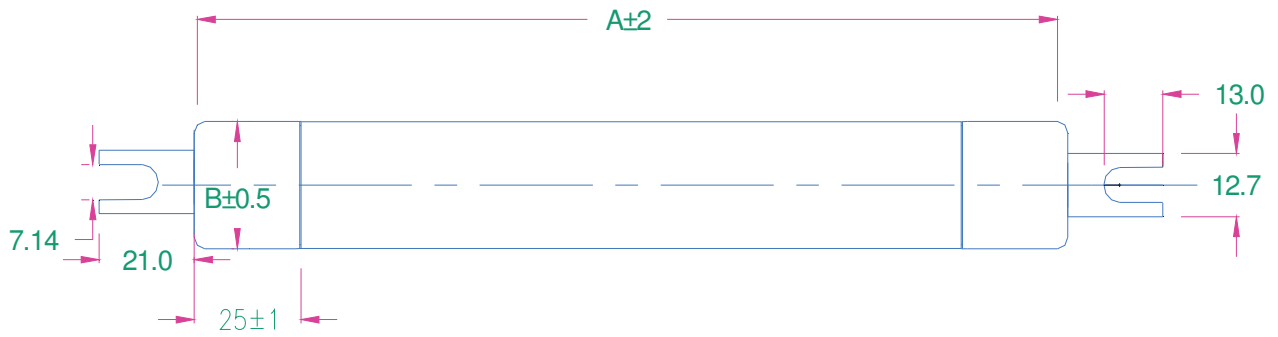
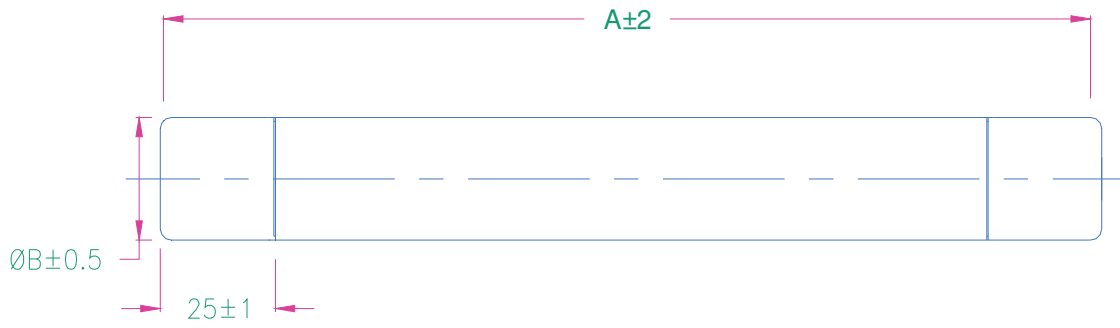


VT PROTECTION FUSES



ITEM	VOLTAGE IN KV	CURRENT IN AMPS	A	B	TYPE
1	3.3/3.66	UP TO 3.15A	145	22	FEIF/FEIFO
2	3.3/3.66/7.2	UP TO 3.15A	195	25.4	FEVT/FEVTO
3	3.3/12	UP TO 3.15A	195	25.4	FEVT/FEVTO
4	11/12	UP TO 3.15A	254	25.4	FEVTL/FEVTLO
5	15.5	UP TO 3.15A	359	25.4	FEVT/FEVTO
6	22/24	UP TO 3.15A	380	25.4	FEVT/FEVTO
7	33/36	UP TO 3.15A	500	25.4	FEVT/FEVTO

FXVT for stud type Fuse . Fifth Letter T for standard tag type(FEVTT)